

Eastern Connecticut Resource Conservation and Development Area, Inc.

139 Wolf Den Road, Brooklyn, CT 06234

Phone: (860) 774-0224 Ext. 105

Fax: (860) 779-0148

John Guskowski, Chair

PARK RIVER GREENWAY — SOUTH BRANCH TRAIL

Phase One: Flatbush Avenue to Nilan Street Hartford, Connecticut

The Eastern Connecticut RC&D received a grant from the CT Department of Environmental Protection to develop a multi-use trail along the South Branch of the Park River in Hartford which is part of a state-designated greenway. A partnership was formed that included representatives from state and federal agencies, the City of Hartford and local community groups. To utilize the publicly owned open space along the river, a multi-use trail would be designed and installed to serve the local community and link to the regional bicycle trail system.

THE SOUTH BRANCH TRAIL:

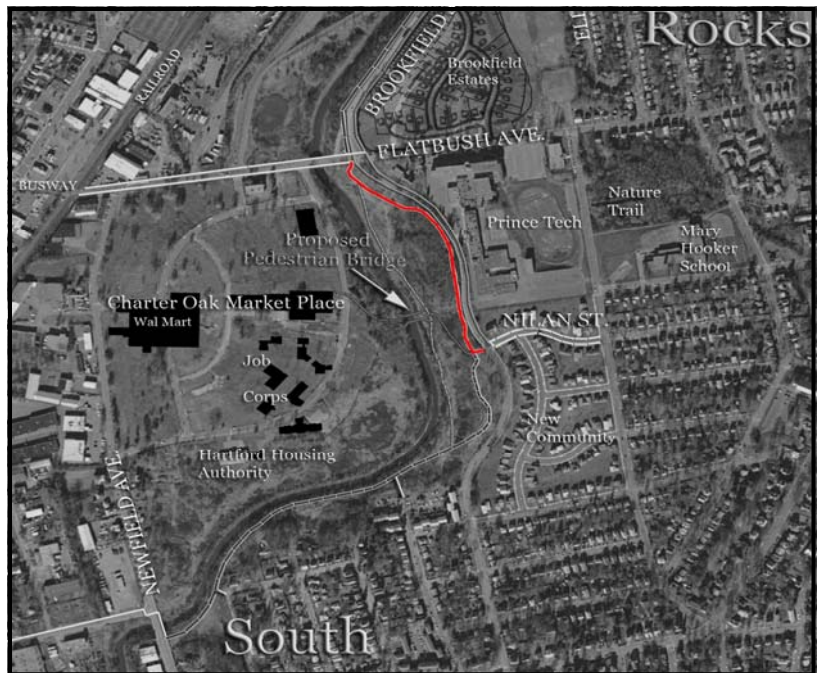
The proposed trail begins on the east side of the river at Hamilton Street across from Pope Park, runs southerly along Brookfield Street, crosses Flatbush Avenue and continues southerly until its end at Newfield Avenue. A schematic design has been completed for this 1.8 mile long paved multi-use trail. The trail is intended to be used by bicyclists, pedestrians and skaters.

Phase One: Flatbush Avenue to Nilan Street

This trail section is 1,690 ft long and will have trail head plazas located at each end. The paved trail is 12 ft wide with 3 ft woodchip shoulders. Construction to begin in May 2008.

Future Plans: Phase Two would consist of constructing the 3,075 ft long section of paved trail from Nilan Street to Newfield Avenue, pending additional funding.

Additional phases would include the detailed design and construction of the section of trail along Brookfield Street from Hamilton Street to Phase One at Flatbush Avenue. This could connect to other trails currently being considered to the north in Pope Park. The southern end of the trail at Newfield Avenue could be extended to the west to the Trout Brook trail being developed in West Hartford and to the south along the Piper Brook corridor, a state designated greenway in Newington.



Phase One of the multi-use trail.

The City of Hartford has a grant to develop a stone dust Meadow Trail for walkers. The Meadow Trail would begin just south of the Flatbush Avenue trail head, traverse down to the river, and connect to the South Branch Trail south of Nilan Street.

THE PARTNERS:

- Behind the Rocks/Southwest Problem Solving Group
- Capital Region Council of Governments
- City of Hartford
- CT Department of Environmental Protection
- Eastern Connecticut Resource Conservation and Development Council
- Hartford Areas Rally Together
- Hartford Housing Authority
- Knox Park Foundation
- US Environmental Protection Agency
- USDA Natural Resources Conservation Service